







# Corratanty Townland, Co. Monaghan

-  English
-  Gaeilge (/ga/monaghan/cremorne/muckno/carrickaslane/corratanty/)
-  Deutsch (/de/monaghan/cremorne/muckno/carrickaslane/corratanty/)
-  français (/fr/monaghan/cremorne/muckno/carrickaslane/corratanty/)

(/)  
 Co. Monaghan (/monaghan/) → Cremorne (/monaghan/cremorne/) → Muckno Civil Parish (/monaghan/muckno/) → Carrickaslane Electoral Division (/monaghan/carrickaslane/) → Corratanty (/monaghan/cremorne/muckno/carrickaslane/corratanty/)

- [Map](#) ↓
- [Area](#) ↓
- [Bordering Townlands](#) ↓
- [Subtownlands](#) ↓
- [Records Search](#) ↓
- [OpenStreetMap](#) ↓

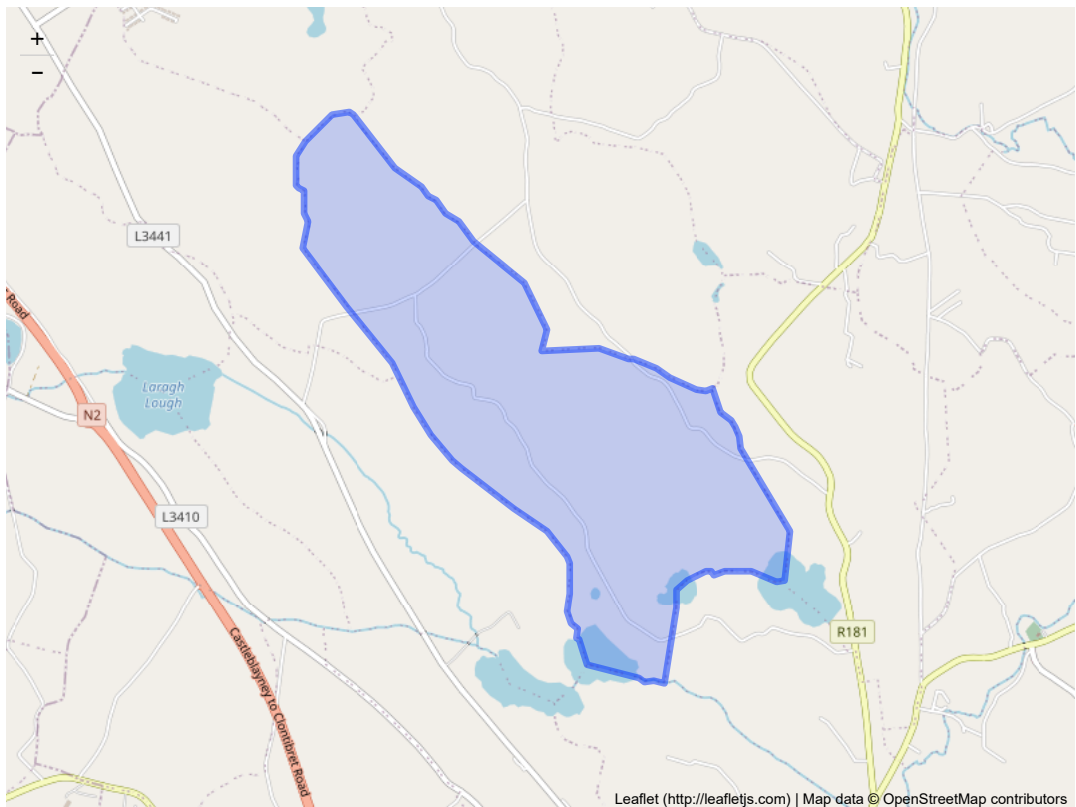
Corratanty is in the Electoral Division of Carrickaslane (/monaghan/carrickaslane/), in Civil Parish of Muckno (/monaghan/muckno/), in the Barony of Cremorne (/monaghan/cremorne/), in the County of Monaghan (/monaghan/)

The Irish name for Corratanty is *Corr an tSeantí*

Corratanty is on Logainm.ie: Corratanty (<http://www.logainm.ie/en/39706>).

## Map

It is located at 54° 8' 38" N, 6° 45' 20" W.



## Area

Corratanty has an area of:

- 1,837,528 m<sup>2</sup> / 183.75 hectares / 1.8375 km<sup>2</sup>
- 0.71 square miles
- 454.06 acres / 454 acres, 0 roods, 10 perches

Nationwide, it is the 13278th largest townland that we know about

Within Co. Monaghan, it is the 38th largest townland

## Borders

Corratanty borders the following other townlands:

- Carrickaslane (/monaghan/cremorne/muckno/carrickaslane/carrickaslane/) to the north
- Corleadargan (/monaghan/cremorne/clontibret/carrickaslane/corleadargan/) to the south
- Derrycreevy (/monaghan/cremorne/muckno/castleblaney-rural/derrycreevy/) to the east
- Drumillard Big (/monaghan/cremorne/muckno/castleblaney-rural/drumillard-big/) to the south
- Drumquill (/monaghan/cremorne/clontibret/carrickaslane/drumquill/) to the west
- Killygola (/monaghan/cremorne/muckno/castleblaney-rural/killygola/) to the east
- Mullaghduff (/monaghan/cremorne/clontibret/carrickaslane/mullaghduff/) to the west

## Subtownlands

- Corratanty (/monaghan/cremorne/muckno/carrickaslane/corratanty/corratanty/)

## Genealogy / Ancestry / Records Search

Curious to see who lived in Corratanty in the past? Maybe even seeing scans of their handwritten census returns?

- Search the 1911 Irish Census for Corratanty ([http://www.census.nationalarchives.ie/search/results.jsp?census\\_year=1911&county19011911=Monaghan&townland=Corratanty&ded=Carrickaslane&search=Search](http://www.census.nationalarchives.ie/search/results.jsp?census_year=1911&county19011911=Monaghan&townland=Corratanty&ded=Carrickaslane&search=Search))
- Search the 1901 Irish Census for Corratanty ([http://www.census.nationalarchives.ie/search/results.jsp?census\\_year=1901&county19011911=Monaghan&townland=Corratanty&ded=Carrickaslane&search=Search](http://www.census.nationalarchives.ie/search/results.jsp?census_year=1901&county19011911=Monaghan&townland=Corratanty&ded=Carrickaslane&search=Search))
- Search Griffith's Valuation (1847-1864) for Corratanty (<http://www.askaboutireland.ie/griffith-valuation/index.xml?action=doPlaceSearch&Submit.x=51&Submit.y=16&Submit=Submit&freetext=Corratanty&countyname=Monaghan&baronynome=Cremorne&unionname=&parishnar>)

## OpenStreetMap

Corratanty was added to OpenStreetMap on 8 Nov 2015 by Stephen\_Co\_Antrim.

### View

[View on OpenStreetMap.org \(https://www.openstreetmap.org/relation/5648722\)](https://www.openstreetmap.org/relation/5648722)

[Show Changes \(https://pewu.github.io/osm-history/#/relation/5648722\)](https://pewu.github.io/osm-history/#/relation/5648722)

### Edit

[JOSM \(http://localhost:8111/import?url=http://api.openstreetmap.org/api/0.6/relation/5648722/full\)](http://localhost:8111/import?url=http://api.openstreetmap.org/api/0.6/relation/5648722/full)

[iD \(https://www.openstreetmap.org/edit?editor=id&relation=5648722\)](https://www.openstreetmap.org/edit?editor=id&relation=5648722)

[Potlatch \(https://www.openstreetmap.org/edit?editor=potlatch2&relation=5648722\)](https://www.openstreetmap.org/edit?editor=potlatch2&relation=5648722)

[Level0 \(http://level0.osmz.ru/?url=relation/5648722\)](http://level0.osmz.ru/?url=relation/5648722)

[© Copyright \(/page/copyright/\)](#) | [Download Data \(/page/download/\)](#) | [How up-to-date is Townlands.ie? \(/page/data\\_freshness/\)](#) | [Who's mapping townlands? \(/mappers/\)](#) | [Townland mapping activity \(/progress/activity/\)](#) | [Townland Index \(/index/\)](#) | [Help add Logainm data to OSM \(/static/logainm/\)](#) | [Maps \(/page/maps/\)](#) | Last update: April 24, 2022, 8:30 a.m.